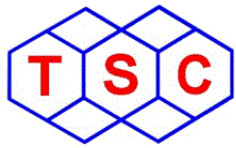




The Siebold Company, Inc.



12534 Wiles Road
Coral Springs, Fl. 33076
(800) 452-9481 * WWW.SIEBOLD.COM

Material Handling • Mission-Critical Power • Controls • Automation • Conveyors
National GC / EC Contractor



The Siebold Company, Inc.

INTEGRATED OPERATIONS & DEPLOYMENT FLOW

STRATEGY



Coral Springs, FL
Corporate Leadership
- Strategy & Oversight

- Executive Leadership
- Corporate Governance
- Strategic Planning
- Safety & Quality Administration
- Estimating
- Accounting Services (A/R & A/P)
- Mechanical Design

Coral Springs, FL

DESIGN & FIELD SUPPORT



Covington, GA
Systems Design &
Deployment Support

- Project Management
- National Program Management
- Estimating Support
- Field Operations and Support
- Installation Planning & Coordination
- Startup & Commissioning Support
- ILS and Documentation
- Controls Development
- Equipment Design & Upgrades

Covington, GA

DEPLOYMENT



Halifax, PA
Field Execution Center
(~60,000 SF)



Electrical & Mechanical
Fabrication



Material Handling and
Printing Press Spare Parts



Assembly & Systems Testing



Warehousing & Inventory



Logistics Coordination



Tooling Management

Halifax, PA

TSC Safety Program



NFPA 704

BLUE = HEALTH

RED = FLAMMABILITY

YELLOW = REACTIVITY

WHITE = SPECIAL



TSC is fully OSHA certified



Continuing safety education



Bi-yearly and annual training of all TSC personnel in OSHA general industry (#1910) and construction standards (#1926)



Standard operating procedures reviewed and updated



Site-specific health and safety plan



Crane and rigging to OSHA standards



Electrical Safety – NFPA 70E



NFPA 70E hazard identification system



Detailed Lockout/Tagout (LOTO) procedures



PPE use enforced at all job sites



Confined space entry safety measures



Electrical work follows NFPA 70E standards



Safety Documentation



Daily safety reports



Development of installation process and standards, including ABB & Lockheed



Incident report and accident reporting



Air and surface environmental test reporting



Hazardous waste disposal manifests and certificates



Certificates of safety training including hazardous material abatement



Crane, PIV and rigging to OSHA standards

Electrical & Power Infrastructure

- Medium & Low Voltage Distribution
- Electrical Distribution Design
- Electrical/Controls Retrofit and Upgrades
- UPS Systems & Generator Plants
- ATS Integration & Redundancy
- Grounding / Bonding Systems
- Live Facility Cutovers



Conveyor Installations

- **Installation of Roller, Belt, and Chain Conveyors**

- Design Consultation & Layout Development
 - Optimization of conveyor paths and layouts
 - Integration with existing equipment and lines

- **Structural Fabrication & Installation**

- Elevated mezzanine and support structures
- Custom steel fabrication, fit-up, and welding

- **Mechanical & Electrical Installation**

- Installation of drives, motors, belts, chains, rollers
- Electrical installation including controls and sensors
- Conveyor alignment and testing

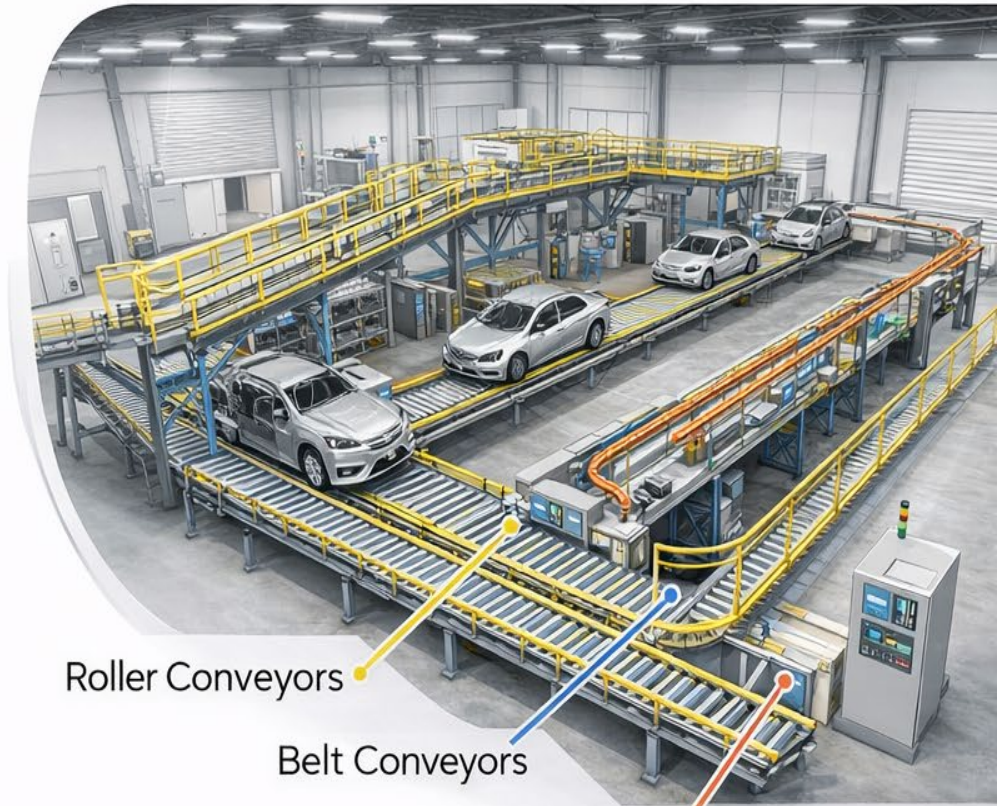
- **Upgrades, Modifications & Retrofits**

- Conveyor extension and relocation projects
- Upgrades to drives, controls, and safety features
- Retrofit to improve throughput and flexibility

- **Safety & Compliance**

- Guarding and emergency stop systems

Compliance with OSHA and site safety requirements



Roller Conveyors

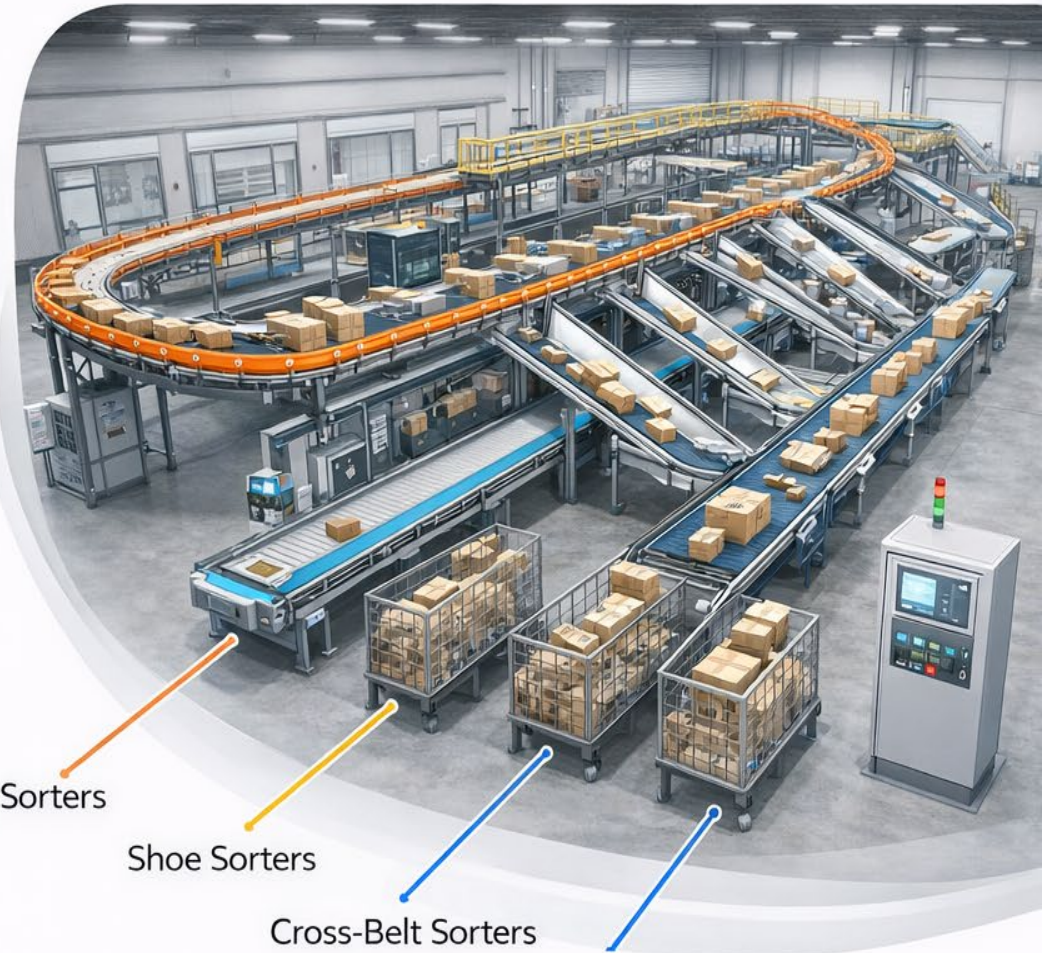
Belt Conveyors

Chain Conveyors



Sorter Installations

- **Sortation Technology Integration**
 - Installation: Loop sorters, Shoe Sorters & Cs
 - Integration of scanners, sensors, & chutes
 - Sortation controls integration & PLC programming
- **Turnkey Installation Services**
 - Design consultation & Layout development
 - Steel fabrication & support structure installation
 - Conveyor installation & alignment
- **Electrical & Controls Scope**
 - Installation of motors, drives, controls, & PLCs
 - Full power distribution & control wiring
 - HMI interface installation & programming
- **System Optimization & Modification**
 - Upgrades, retrofits, & expansions
 - Optimization of sortation equipment
 - Software & PLC logic modifications for throughput improvements



Safety & Compliance

- Installation of guarding & etstop systems

Automation, Material Handling, & Robotics

- PLC / HMI Programming
- Robotics (Fanuc, ABB, Yaskawa)
- Vision & Motion Systems
- Industrial Networking
- UL-508A Panel Capabilities
- Motion Systems
- Retrofits and Upgrades
- Conveyor system
- Staging systems
- Palletizers



Sortation & Retrieval System

Mechanical Installation in Active Environments

- High-throughput tray & parcel sortation systems
- Structural steel & mezzanine integration
Precision equipment setting & alignment
Induction, divert, merge & discharge installation
- Brownfield retrofits & live-facility modifications
- Tight-clearance & phased installation sequencing

Electrical & Controls Integration

- Power distribution & MCC tie-ins
- Branch circuit deployment & load balancing
- PLC panel placement & I/O field terminations
- Scanner, vision & network device installation
- Controls interface to OEM architecture
- Energization planning & commissioning support



MECHANICAL SYSTEMS DELIVERY

Structural Installation & Equipment Setting

- Structural steel & mezzanine systems
- Conveyor & sortation system installation
- Robotic pedestals & precision anchoring
- Heavy equipment setting & alignment

System Modification & Retrofit

- Brownfield integration & live-facility work
- Equipment demolition & relocation
- Structural reinforcement & reconfiguration

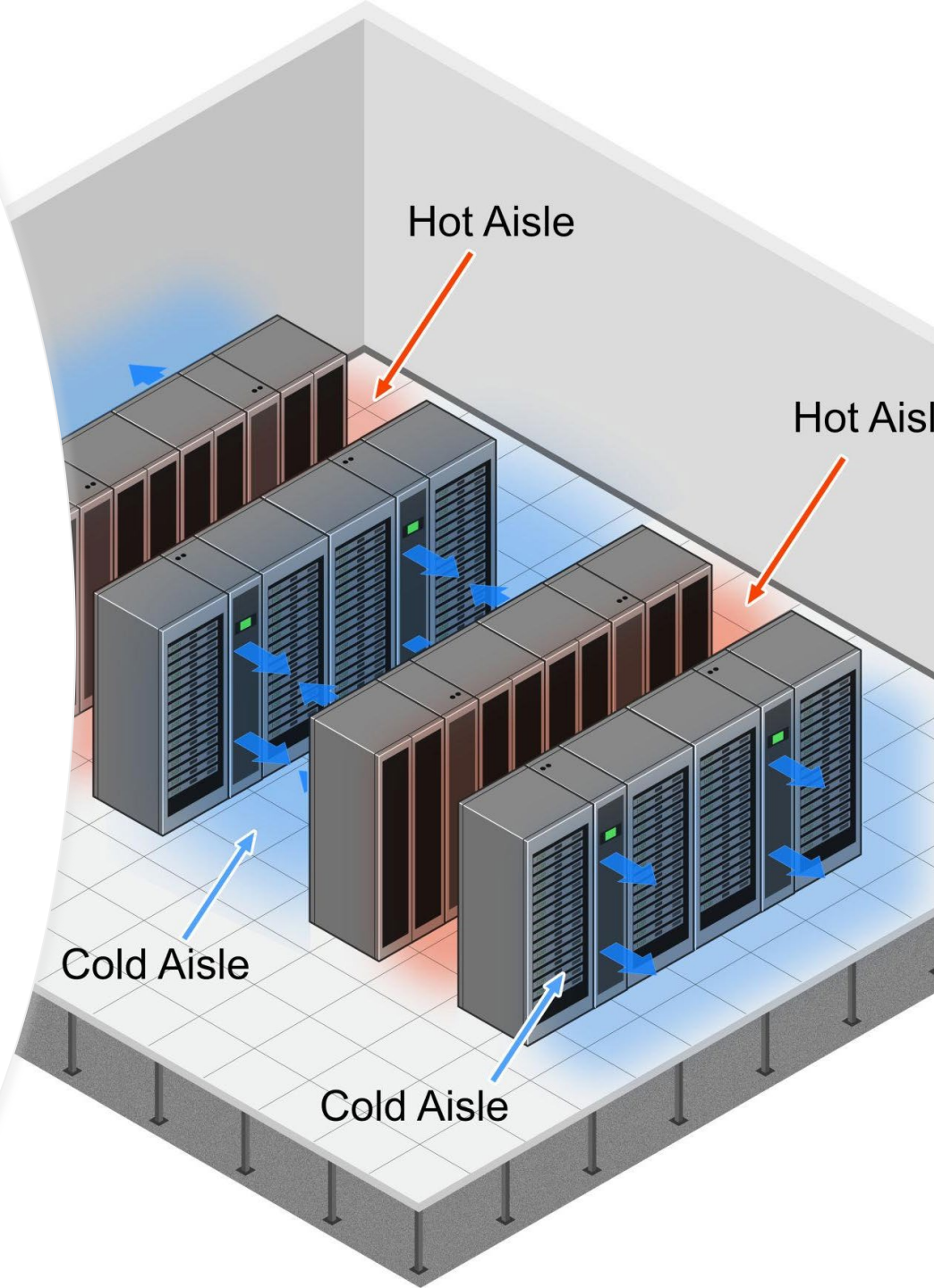
Precision Execution

- Laser layout & tolerance verification
- Engineered lift sequencing & rigging plans
- Tight-access installations
- Integrated commissioning support



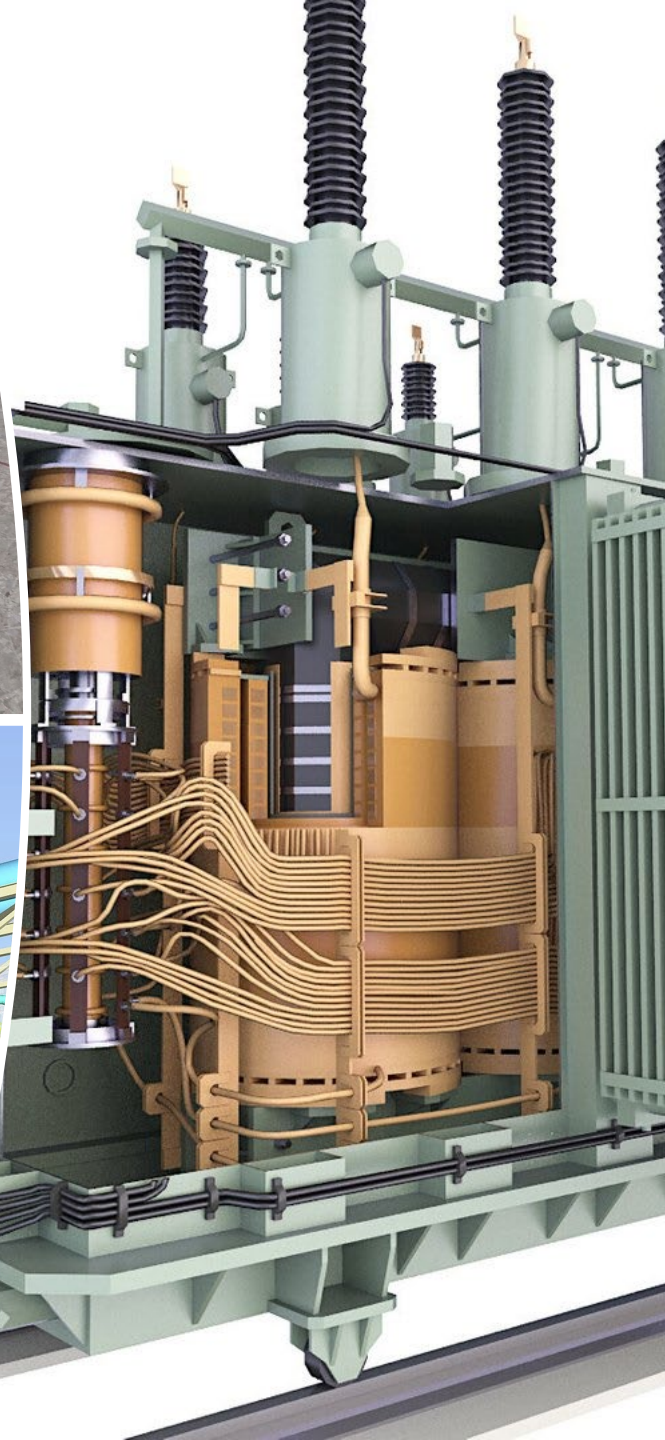
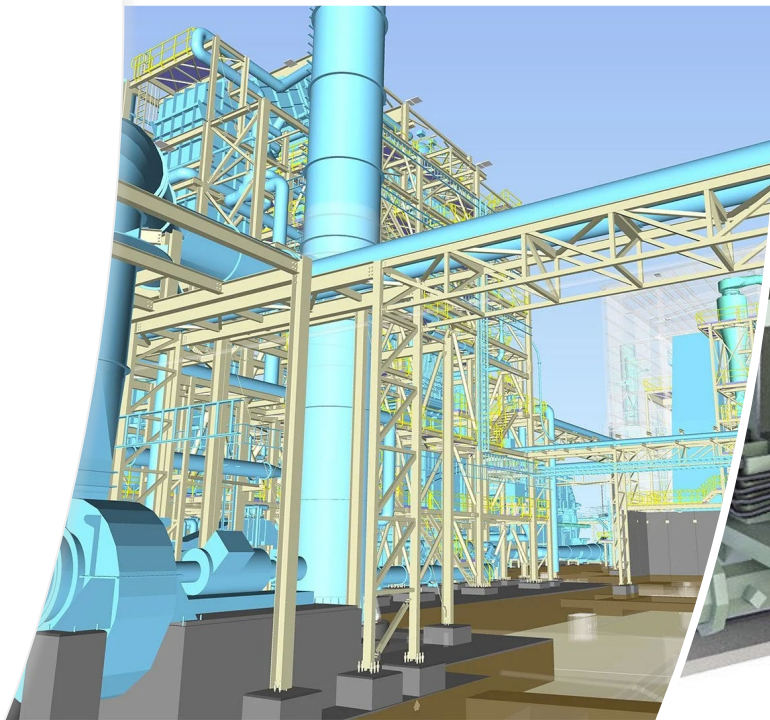
Mission-Critical Data Centers

- High-Density Power Architecture
- Utility Coordination (MV/LV)
- Always-On Execution
- Greenfield Through Commissioning
- Designed for Scalability
- Networking
- Cooling



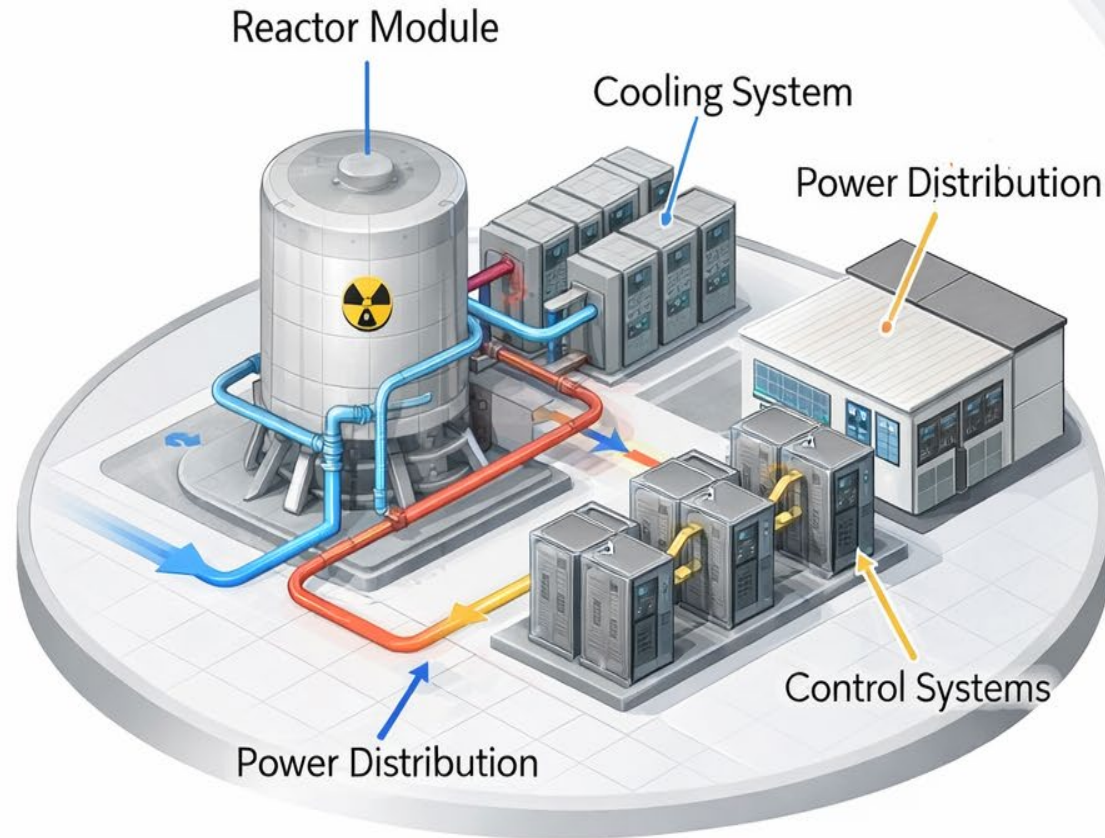
Engineering & Design

- Site surveys
- Detailed scopes of work
- Mechanical design
- Controls programming
- Building modifications
- Electrical design
- Load calculations
- Management



Small Modular Nuclear (SMR) Installations

- **Nuclear-Grade Installation Execution**
 - QA/QC Driven (NQA-1 Aligned)
 - Strict Documentation & Traceability
 - Regulatory & Safety Compliance
- **Modular Construction & Deployment**
 - Skid & Prefabricated System Installation
 - Accelerated Field Assembly
 - Designed for Scalability
- **Balance of Plant (BOP) Systems**
 - Cooling & Heat Rejection Systems
 - Power Distribution (MV/LV)
 - Auxiliary Mechanical Systems
- **Electrical & Controls Integration**
 - Cable Tray / Conduit Infrastructure
 - Instrumentation & Controls (I&C)
 - Grounding & Bonding Systems



Integrated Mechanical • Electrical • Automation Delivery

National Infrastructure Execution Platform

The Siebold Company, Inc.

We're Ready to Support Your Next Project

Coral Springs, FL | Covington, GA | Halifax, PA

www.Siebold.com | (800) 452-9481

